

## ABOUT POLYCON

Mission Statement, company info,  
history, quality statement.

*Disclaimer here:*

[www.polyconspf.com](http://www.polyconspf.com)  
1-855-PC1-FOAM



*Polyurethanes for the Construction Industry*



POLYURETHANES FOR THE  
CONSTRUCTION INDUSTRY



# PC 500

OPEN CELL SPRAY FOAM INSULATION



## HOW OPEN CELL WORKS

Open Cell Spray Polyurethane Foam is the best alternative to traditional insulations. Open Cell Spray Foam is often used in residential applications in exterior walls, attics, roof lines and under interior elevated floors optimizing the value and impact of this advanced technology for insulation and sound attenuation.



# PC 500

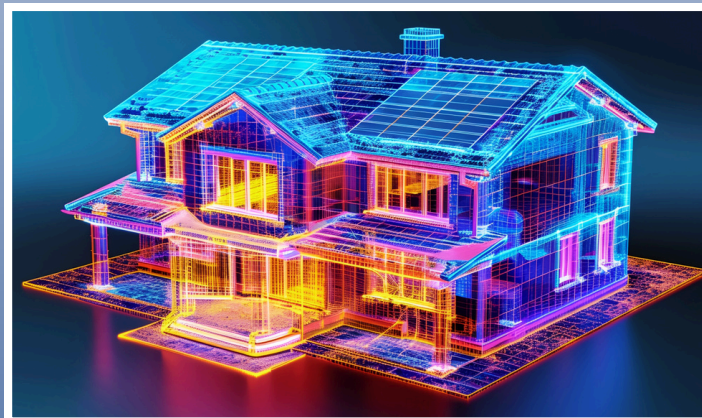
# OPEN CELL SPRAY FOAM INSULATION

**PC 500** Open Cell Spray Foam Insulation is a fluid applied system that immediately expands to almost 150 times its original liquid volume, creating a monolithic, insulative blanket, that eliminates air infiltration. While eliminating draft and unwanted air movement, **PC 500** Open Cell Spray Foam insulates the interior space from thermal transfer of heat or cold, stabilizing the interior temperature.



## Where to apply PC 500 Open Cell Spray Foam Insulation

- Exterior Walls
- Crawlspace
- Under Roof Deck
- Basement Walls
- Attic Floor
- Fill gaps and voids in wall and floor assemblies



## DID YOU KNOW...

Air infiltration accounts for up to 40% of a home's energy loss.

## BENEFITS OF PROPER INSULATION

In addition to saving money on energy bills and improving comfort, sealing and insulating your attic can help address other common household problems, such as:

- Reducing noise from outside
- Minimizing the pollen, dust, insects, and/or other pests from entering your home
- Providing better humidity control
- Reducing ice dams on the roof and eaves - a common problem in snowy climates

([www.energystar.gov/sites/default/files/tools/ES\\_Insulation\\_Factsheet\\_2023.pdf](http://www.energystar.gov/sites/default/files/tools/ES_Insulation_Factsheet_2023.pdf))

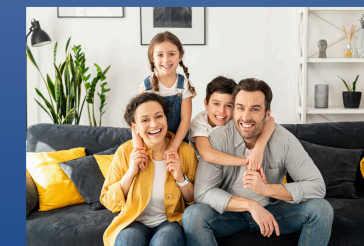


## Benefits of PC 500 Open Cell Spray Foam Insulation

- Significantly reduces unwanted moisture and air infiltration
- Adheres well to most building materials
- 



Energy Savings



Better Indoor Air Quality



Better Comfort

1-855-PC1-FOAM

[www.polyconspf.com](http://www.polyconspf.com)